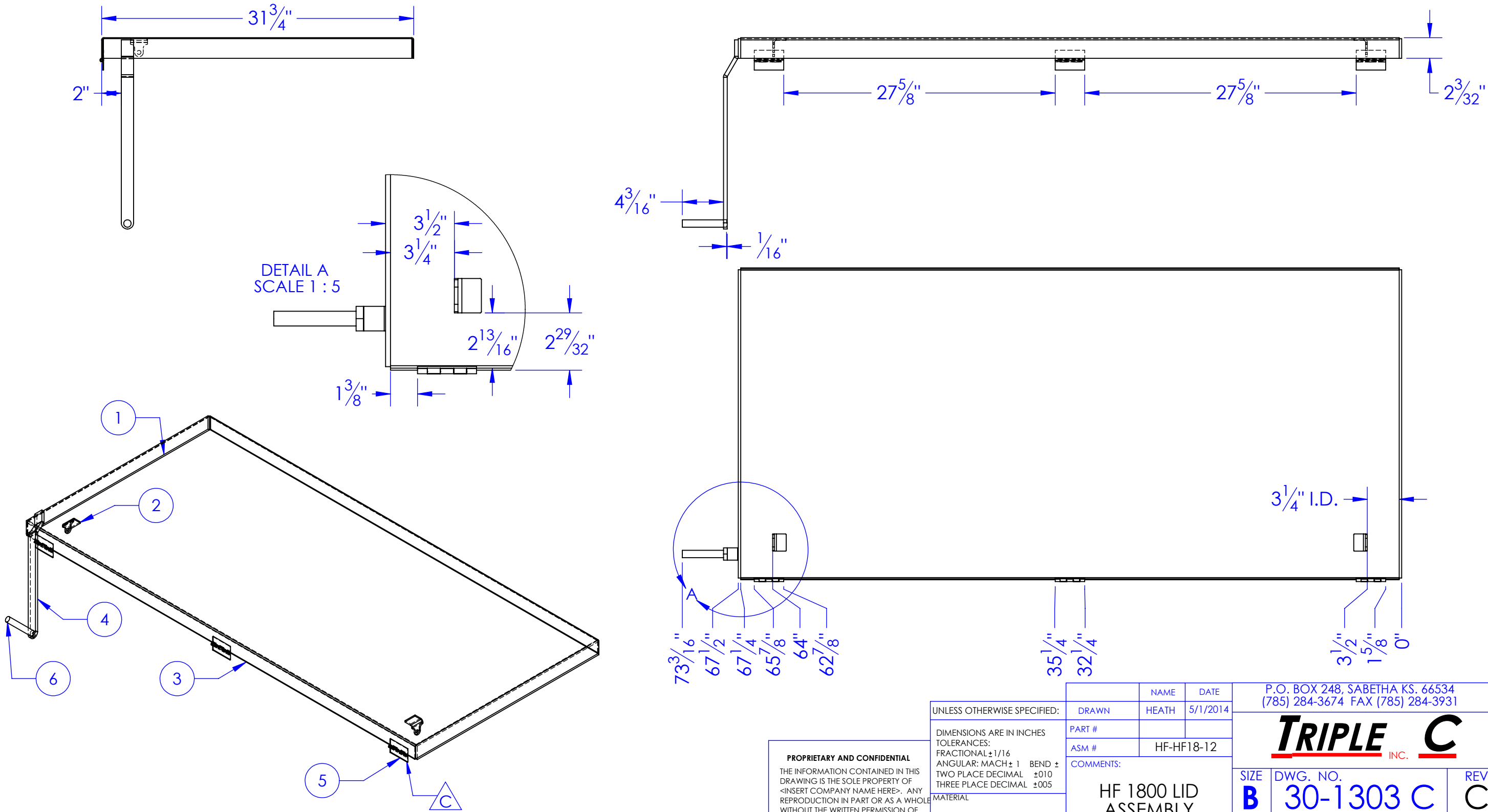


ITEM NO.	PART NUMBER	DESCRIPTION	MATERIAL	DRAWING #	QTY.
1	FI .25 X 2 L 31.375	LENGTH: 31-3/8"	FI 1/4" x 2"	STOCK	2
2	FP-HF12-51	SHOCK MOUNT TAB	7ga HRS.	30-2207	2
3	FP-HF18-12	LID, BREAK, 1800 HYDRA FEEDER	12ga HRS.	30-2304	1
4	FP-HF18-21	HANDLE, HYDRA FEEDER 1800	3/8" HRS.	30-2306	1
5	HD-HISS S324813	HINGE STAINLESS STEEL SPUN PN		STOCK	3
6	ST-HR .75 ROUND L 4.5	LENGTH: 4-1/2"	HR ROUND 3/4"	STOCK	1

REV.	REVISIONS	DATE	APPROVED
	DESCRIPTION		
B	UPDATED TO MATCH 3D MODEL	10/2/2013	
C	ADDED HINGES TO BOM	5/1/2014	



**PROPRIETARY AND CONFIDENTIAL**  
THE INFORMATION CONTAINED IN THIS DRAWING IS THE SOLE PROPERTY OF <INSERT COMPANY NAME HERE>. ANY REPRODUCTION IN PART OR AS A WHOLE WITHOUT THE WRITTEN PERMISSION OF <INSERT COMPANY NAME HERE> IS PROHIBITED.

UNLESS OTHERWISE SPECIFIED:
DIMENSIONS ARE IN INCHES
TOLERANCES:
FRACTIONAL ± 1/16
ANGULAR: MACH ± 1 BEND ±
TWO PLACE DECIMAL ± 0.10
THREE PLACE DECIMAL ± 0.005
MATERIAL
DO NOT SCALE DRAWING

	NAME	DATE	P.O. BOX 248, SABETHA KS. 66534 (785) 284-3674 FAX (785) 284-3931		
DRAWN	HEATH	5/1/2014	<div><b><i>TRIPLE</i></b> <b><i>C</i></b></div> <div>INC.</div>		
PART #					
ASM #	HF-HF18-12				
COMMENTS:			SIZE	DWG. NO.	REV
HF 1800 LID ASSEMBLY			<b>B</b>	<b>30-1303 C</b>	<b>C</b>
			SCALE: 1:10		WEIGHT: 92.17